

Customer Success Onboarding Guide



Ready! API Onboarding Guide

Getting Started with Ready! API	1
SoapUI NG Pro Learning Stages	2
LoadUI NG Pro Learning Stages.....	3
ServiceV Learning Stages	4
Secure and TestServer Helpful Tips.....	5
Training Resources	6
Training Resources Continued	7

Getting Started with Ready! API

1. [Ready! API Quick Start Page](#)

Start here to download and activate quickly.

2. [Videos – To Help You Get Started](#)

- a. Activating Ready! API License.
- b. Installing for the First Time.
- c. Optimizing Java Runtime Memory for Ready! API.
- d. Composite Projects for Shared Testing in Teams.
- e. Passing Data Between Steps with Property Transfers.
- f. Advanced Custom Testing with Groovy Script.
- g. Switching Environments, Variables, and Data Sources.
- h. Validating Responses with Assertions.
- i. Reporting in Ready! API.
- j. Kicking off your First REST and SOAP Test.

3. [Ready! API Product Hubs:](#)

These pages will be your one stop shop for support resources for all 5 Ready! API Products. Go here for best practices, videos, to connect with other users, and more. Please select the icons below:



SoapUI NG Pro

LoadUI NG Pro

Secure

ServiceV

TestServer

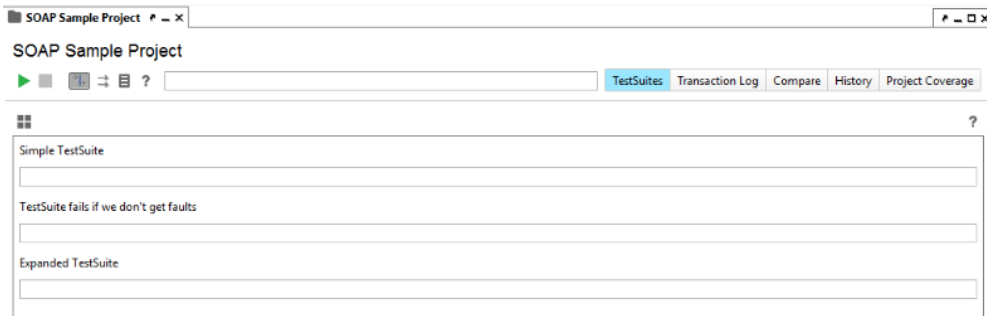
SoapUI NG Pro Learning Stages

Below are the user knowledge Learning Stages. To gauge what level you are at, follow these stages as you get started with the SoapUI NG Pro to master the functions and features listed. Links to documentation are included.

SoapUI NG Pro

➤ Beginner

- [Installation](#) – Go here to download and activate quickly.
- Create SOAP or [REST test case](#) – functional tests are in three different levels; TestSuites, TestCases, and TestSteps.



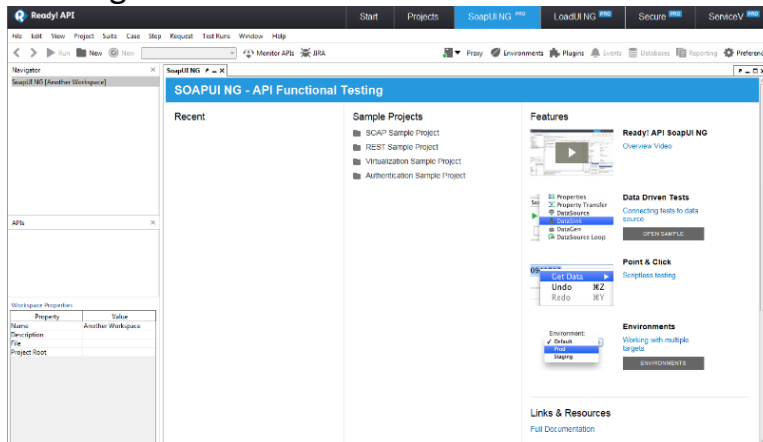
- [Add Assertions](#) – after you have created your TestStep you can add assertions.

➤ Intermediate

- Automating test cases for regression testing.
- Create composite projects for source control.
- Setup Data Driven tests.
- REST Discovery for creating tests from HTTP traffic.

➤ Advanced

- Groovy scripting with SoapUI object model.
- Create Security tests for APIs.
- Basic load testing of APIs.



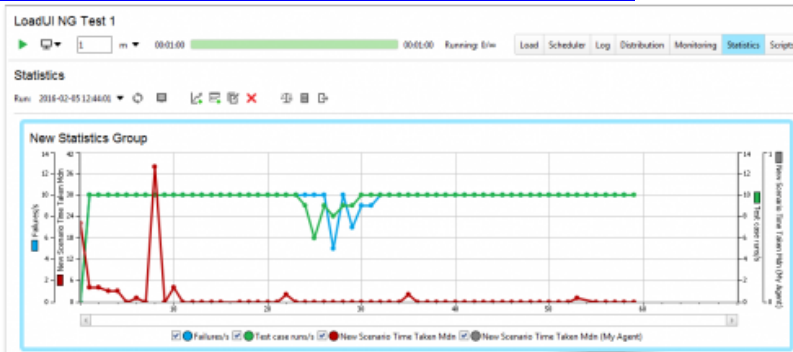
LoadUI NG Pro Learning Stages

Below are the user knowledge Learning Stages. To gauge what level you are at, follow these stages as you get started with the LoadUI NG Pro to master the functions and features listed. Links to documentation are included.

LoadUI NG Pro

➤ Beginner

- [Create a new load test from existing TestCase.](#)
- Configure load test assertion against time taken to maintain SLA.
- [Review results data in the “Statistics” tab.](#)



- [Generate a report.](#)

➤ Intermediate

- [Configure multiple TestCase scenarios.](#)
- Distributed load test to agents (either other machine, docker container, or AWS).
- Use DataSource to provide unique values in your load test to avoid caching.
- Use the “Compare Runs” feature to see whether your API environment improvements resulted in response time improvements.

➤ Advanced

- Troubleshoot request level data with the “Log” tab.
- [Monitor server performance real time as you run the load test.](#)
- Automate load test runs in your CI environment.

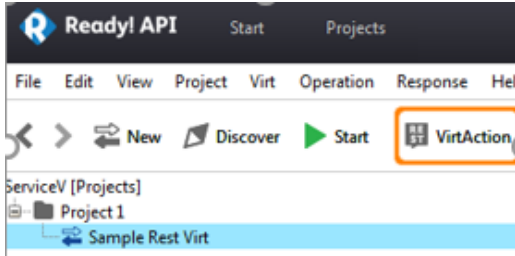
ServiceV Learning Stages

Below are the user knowledge Learning Stages. To gauge what level you are at, follow these stages as you get started with the ServiceV to master the functions and features listed. Links to documentation are included.

ServiceV

➤ Beginner

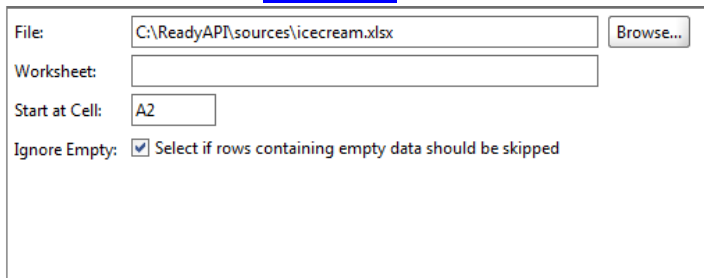
- Configure a virt from scratch.
- Configure a virt from descriptor (WSDL, SWAGGER).



- Deploy the virt to VirtServer for sharing the environment.
- View transactions against the virt deployed on the VirtServer.

➤ Intermediate

- Create a virt from HTTP traffic (Either proxy or redirect feature).
- Configure 'Latency' in Behavior tab.
- Configure a dynamic dispatch to return an expected response based on the value in the request.
 - For SOAP virt configure 'Query Match'.
 - For REST virt configure 'Parameter'.
- Configure 'DataSource' to your virt so that the data in the response is populated from an external [Excel file](#) or a database table.

A screenshot of the 'DataSource' configuration dialog box. It contains the following fields and options:

- File: C:\ReadyAPI\source\icecream.xlsx (with a 'Browse...' button)
- Worksheet: (empty text box)
- Start at Cell: A2
- Ignore Empty: Select if rows containing empty data should be skipped

➤ Advanced

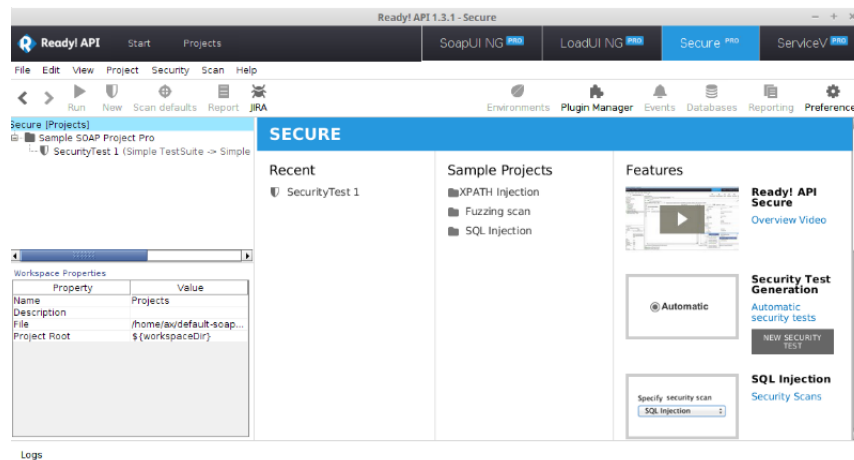
- Add various user profiles in the VirtServer for ServiceV users.
- Configure the Routing in such a way that a part of your API call returns a virtual response while another part of your API returns a real API response.

Secure and TestServer Helpful Tips

Secure

➤ Getting Started

1. Creating SoapUI NG Test Project
 - a. Secure tests check requests in SoapUI NG TestCases
2. Creating and Running Secure Tests
 - a. In the New Security Test dialog, select the TestCase and unselect any scans you do not need. Now you can run the security test.
3. Viewing Test Results
 - a. If any scans fail during the test run, the progress bar will turn orange, but the test will continue until scans are run.
4. Adding Assertions to Security Scans
 - a. After security scan finishes, make sure that the service does not take too long to respond in case of unexpected input with Boundary Scan response.



TestServer

➤ Tips for Using TestServer

- TestServer does not start automatically when you launch your computer. You need to start it manually.
- Use default names that are descriptive for the test steps that you create.
- You can put these files to a folder and allow Ready! API TestServer to access it by setting the allowed.file.paths property. Otherwise, you will need to send another POST request with the files. See Providing Files for Tests (text-based recipes) and Data-Driven Recipes(code-based recipes).

Training Resources

WiseClouds - [Training Partner Services](#)

SoapUI NG Pro On-Demand Video Training Bundle with Certification.....\$149

SoapUI NG Pro Certification..... \$99

- This exam consists of 60 multiple choice questions. You have 60 minutes to complete the exam.
- You must complete in one sitting and answer all the questions before completing.
- You have two chances to pass if you are unsuccessful the first time.

SoapUI NG Pro On-Demand Video Training\$99

- This extensive, self-paced training course gives you all the tools you need to get the most from SoapUI NG Pro.
- The class is composed of 4 ½ hours of lectures along with dozens of straightforward, easy-to-understand examples and demonstrations. More than 150 questions will measure your comprehension of the materials, and thus prepare you for the optional SoapUI NG Pro certification exam.

SoapUI NG Pro Onsite Training (2 days)\$19,995

- 16 hours for 20 student max.
- 100+ hands on exercises.
- Quizzes, Labs, Case Studies, and Final exam.

SoapUI NG Pro Live Instructor-led Webinar (2 days)\$11,995

- 16 hours for 10 student max.
- 100+ hands on exercises.
- Quizzes, Labs, Case Studies, and Final exam.

	On – Demand	Webinar	Onsite
Price	\$99/\$149	\$11,995	\$19,995
Duration (hours)	4	15	15
Max # of students	1	10	20
Kickoff meeting, customization, personal attention, free follow-up		X	X
Suitable for experienced users		X	X
Hand-on exercises		100+	100+
Quizzes	X	X	X
Labs, case studies, final exam		X	X
Prepares student for certification	X	X	X
Course Availability	Anytime	Scheduled	Scheduled

Contact your Customer Success Advisor to sign up for these trainings or you can buy direct on our website @ [Training and Certification](#).

SMARTBEAR ACADEMY **Ready! API** *FREE TRAINING*

[SmartBear Academy – Free Training for Customers](#)

101 Monthly Training is hosted by Manager of Sales Engineering, Mike Giller. We recommend Customers attend this training prior to the 201 and 202 product specific trainings.

201 and 202 SmartBear Academy sessions are held quarterly and Free to all Customers. During the trainings users like you will learn about best practices and recommendations that are the baseline to your success, while improving your day to day productivity with SoapUI NG Pro, LoadUI NG Pro, and ServiceV, and coming soon Secure. Understand the why behind the technical how to.

At the end of the Academy training sessions Customers that attend will receive a SmartBear Academy Attendee, Graduate Certificate that is Product Specific.

There are currently three different Academy Foundations series for the Ready! API products:

- SoapUI NG Pro
- LoadUI NG Pro
- ServiceV
- Secure (starting in Q4)

Ask your Customer Success Advisor for more details and upcoming dates.

Or visit our SmartBear Academy Training Page:

<https://support.smartbear.com/ready-api/academy/>